

APP DOWNLOAD AND CONNECTION GUIDE

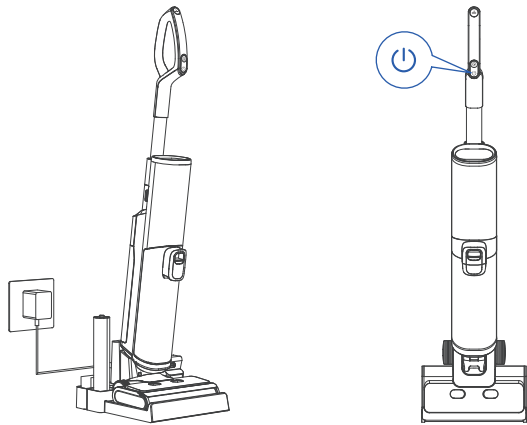
Search for Proscenic APP on App Store (IOS devices) or Google Play (Android devices). Or you could scan the QR Code below to download the APP.



Step 1:

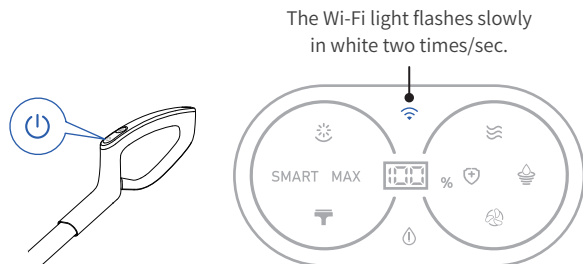
Once the unit has been assembled, ensure that it is fully charged and press the power button to switch it on.

Note: The device can be connected to the internet when it's charging.



Step 2:

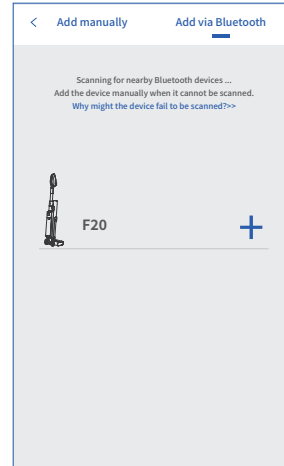
Press and hold the power button for 5 seconds to enter pairing mode or reset Wi-Fi.



BLUETOOTH CONNECTION

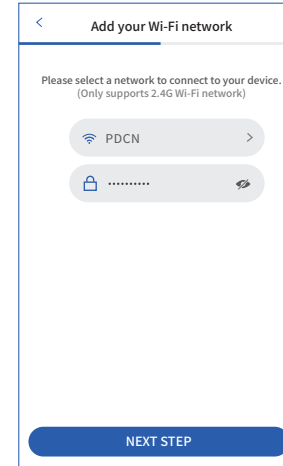
Step 1:

Open the app, turn on Bluetooth and Wi-Fi on your phone, search for the nearby devices.



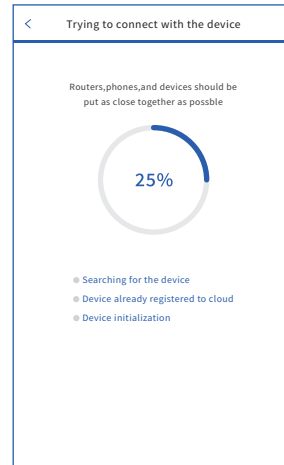
Step 2:

Select a network to connect your device to. (Only 2.4G Wi-Fi networks are supported)



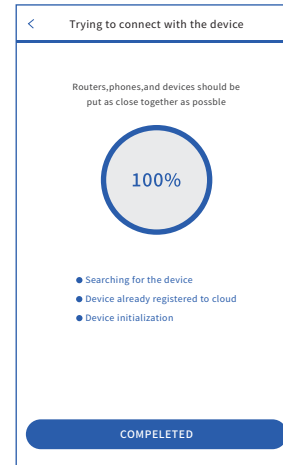
Step 3:

Connecting.
(The Wi-Fi light flashes fast in white four times/sec.)



Step 4:

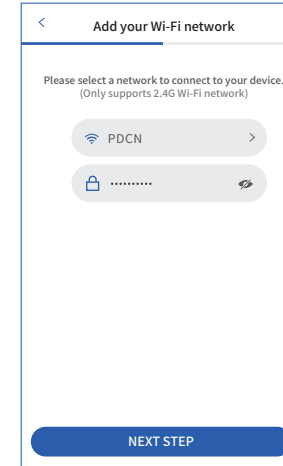
Connection is completed, start using the device. (The Wi-Fi light is always on in white.)



MANUAL CONNECTION

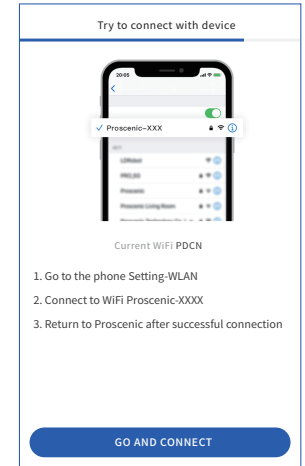
Step 1:

Select a network to connect your device to. (Only 2.4G Wi-Fi networks are supported)



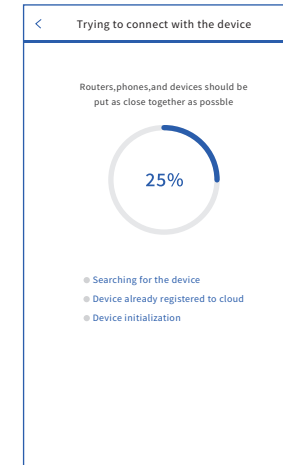
Step 2:

Go to Settings - WLAN list to connect to the device's hotspot "Proscenic-XXX".



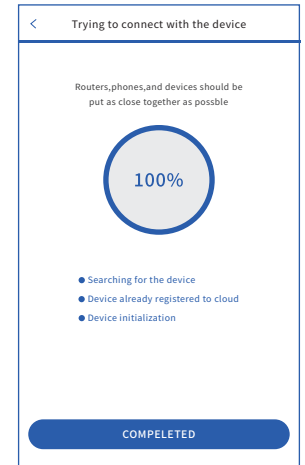
Step 3:

Connecting.
(The Wi-Fi light flashes fast in white four times/sec.)



Step 4:

Connection is completed, start using the device. (The Wi-Fi light is always on in white.)





PROSCENIC

F20 APP 说明书 美规

Design Date: 2022-01-07

物料编码

成品尺寸

200*95mm / 三折页

工 艺

不过膜

材 质

128G铜版纸

印刷要求

4C单面印刷

版 本

V1.11